

# GR2205T



## GR2205T Motor Grader

GR2205T motor grader is mainly used for ground leveling, ditching, slope scraping, bulldozing, scarification, snow removal for large areas such as highway, airports, farmlands etc. The machine features compact structure and high reliability, is the indispensable construction machinery for national defense projects, urban and rural roads and other etc. building construction and water conservancy construction, farmland improvement, etc.

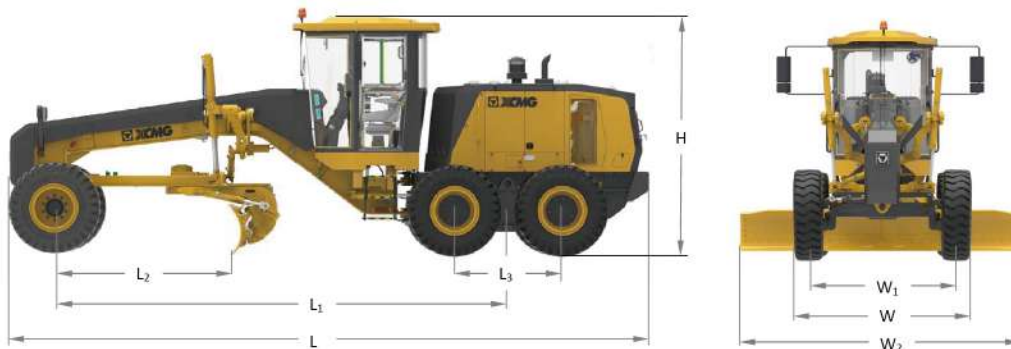
## Performance and characteristics

- Load sensing hydraulic system has small operating force, good operating feeling;
- Engine variable power control technology for higher energy efficiency;
- Reinforced drive axle for long lifetime, higher reliability;
- Full view cabin with better front visibility, optimized internal manipulation and overall internal layout, meeting ergonomic needs and higher comfort.
- The air conditioning flue is integrated in cabin interior design, significantly improves the cooling and heating effect.
- The working device is more reliable with the integral angle position device, high strength rotary support and overload protection worm gearbox.
- Optimized machine layout realizes fuel filling from ground and easy access to service and maintenance points.

## Main dimensions

Unit: mm

Model	L	L1	L2	L3	H	W	W1	W2
GR2205T	9230	6497	2524	1538	3432	2625	2156	4270



## Main specifications

Item	Content	Unit	GR2205T	
<b>Basic parameter</b>	Engine model		QSB6.7	
	Rated power/speed	kW/rpm	164/2200	
	Machine dimension(standard)	mm	9230×2625×3432	
	Machine weight(standard)	kg	16500	
	Tire specification		17.5--25	
	Wheel track	mm	2156	
	Axle distance between front and rear	mm	6497	
	Wheel base between middle and rear	mm	1538	
<b>Performance parameters</b>	Drive speed, forward	km/h	5/9/12/20/25/45	
	Drive speed, reverse	km/h	5/12/25	
	Traction force f=0.75	kN	≥85	
	Maximum gradeability	%	≥25	
	Tire inflation pressure	kPa	260	
	Work system pressure	MPa	26	
	Transmission box pressure	Mpa	1.6-1.8	
	<b>Working parameters</b>	Maximum steering angle, front wheel	°	±48
Allowable tilt angle, front wheel		°	±17	
Maximum oscillation, front axle		°	±15	
Maximum oscillation, balance box		°	Front 15 rear 15	
Maximum steering angle, frame		°	±25	
Minimum turning radius		m	7.6	
Blade		Maximum lift above ground	mm	500
		Maximum cutting depth	mm	720
		Maximum tilt angle	°	90
		Cutting angle	°	Front 40 rear 5
	Swivel angle	°	360	
	Length × Height	mm	4270×610	
<b>Capacities</b>	Coolant	L	50	
	Fuel tank	L	330	
	Engine	L	24	
	Transmission box	L	38	
	Balance box	L	75 each	
	Drive axle	L	25	
	Hydraulic oil	L	65	