

# XCMG FOR YOUR SUCCESS

# XE26U

Hydraulic Excavator

Operating weight: 2,780kg

Rated power: 15.4kw/2,400rpm

Bucket capacity: 0.06m<sup>3</sup>



## More Reliable and Durable

The canopy is installed at four points, which not only meets the safety requirements of TOPS, but also meets the vision requirements to the greatest extent. The standard retractable seat belt improves the operator's safety.

The parts with high stress on the boom and arm are partially strengthened, meantime, the structure is adjusted to disperse the stress and improve the service life.

Equipped with an automatic two-speed motor, which can automatically switch the walking speed according to road conditions.

The working pipelines and wiring harnesses are built into the boom, making them well protected and increasing the service life. The short-tail design ensures the operation in narrow working conditions.

Auxiliary pipelines are provided as standard to meet diverse construction needs.



# Working Conditions

Widely used in landscaping, vegetable greenhouses, farmland and orchards, water supply, household gas pipelines installation, house remodeling, basement construction, etc.

## More energy-saving and environment-friendly

Equipped with an engine that meets China III/Euro V/North American T4F emissions, which featured with strong power, energy saving and environmental protection, high reliability and excellent performance

The core hydraulic parts adopt the latest technological achievements, with low energy consumption, quick response, precise control and small impact, which can maintain strong digging capacity and excellent working efficiency. The engine and the hydraulic system are perfectly matched to ensure that the engine works in the best fuel consumption area, improve the fuel utilization and save the cost. The new hydraulic system provides sufficient flow for each working device, and the working efficiency is high.

## More Comfortable and Safe

The new designed arm rests, cup holder, etc., maximize the comfort and convenience while operating.

The new designed reversible armrest box can increase the size of the passage.



## More Efficient Return

With a compact short tail design, it can work in narrow working conditions without worrying about the tail hitting obstacles. The left and right boom swing angle is respectively 75° and 55°, which can cooperate with the upper structure to realize the compound operation. By cooperating with the swing function of the upper structure, the excavation parallel to the wall can be realized in a narrow space. The new color 7' LCD screen meets the requirement of the ergonomics and can realize rapid switching of different modes. The system can provide 7 languages for the operators' choice, with complete instrument information display, more automatic control functions, intelligent diagnosis of fault causes, and has reminder of maintenance information and fuel filling, which can effectively shorten the maintenance time.

Two auxiliary pipelines with adjustable electronic proportional flow are optional, and the front end of the pipeline is equipped with a quick-plug device, which can realize the rapid switching of attachments and meet the use requirements of different attachments under various complex working conditions.



## More Efficient Return

After opening the hood, the maintenance of the fuel filter and the oil filter is reachable on ground level. The oil checking and filling are extremely convenient.



For diversified construction conditions, we provide customers with

## Multifunctional equipment with reliable quality and advanced performance

Greatly expanding the functions and fully extending the operation scope of the excavator, continuously to create more value and super high profit for you

### Side jack hammer



Application:  
Cement road and concrete fragmentation, building demolition

### Olecranon shear



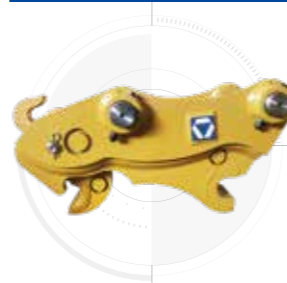
Application:  
Dismantling of scrapped and heavy vehicles, steel structures such as steel plants, metals, ships, and bridges

### Compactor



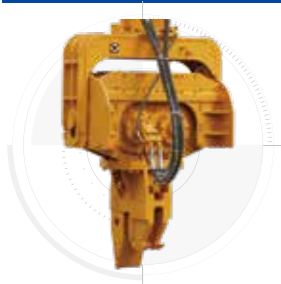
Application:  
Highway slope protection, Consolidation of dams and ditches

### Quick coupler



Application:  
Quickly coupled with XCMG diversified attachments

### Pile driver



Application:  
Medium and short pile projects for bridges, cofferdams wharfs and deep foundation pit support

### Orange peel grab



Application:  
Loading and dumping of irregular and bulky materials such as scrap iron, pig iron, ore, garbage, etc

### Pulverizer



Application:  
Secondary crushing of concrete and separation of steel and concrete

### Double cylinder shear



Application:  
Abandoned factory buildings, dismantling and other projects

### Hydraulic grapple



Application:  
Special equipment for loading and dumping wood and stone

### Hydraulic pilers



Application:  
Grabbing of construction waste, stone, wood and other materials

### Hydraulic shear



Application:  
Special equipment for dismantling scrapped cars and renewable resources

### Top side hammer



Application:  
Mines, road crushing, municipal garden renovation, building demolition, reinforced concrete crushing, etc

## Customization

Engine	
Engine model	D1105
Emission levels	National III
Automatic preheating	√
Air filter	√
Oil-water separator	√
Air filter dual elements	√
Concentric cylinder oil filter	√
Concentric cylinder fuel main filter	√
Fan guard	√
Radiator auxiliary tank	√
Alternator (40A)	√

Hydraulic system	
Pilot filter	√
Hydraulic oil suction filter	√
Energy container	√
Hydraulic oil ISO VG46	√
Hydraulic pipeline	√
Hydraulic oil ISO VG32, 68	•
Spare valve plate	√

Safety and security configuration	
Alarm horn	√
Travel parking brake	√
Swing parking brake	√
Battery disconnect switch	√
Dozer hold valve	•
Anti-burst valve of boom and arm	•
Rotating warning lamp	•
Hydraulic safety locking lever	√
Rear view mirrors(L/R)	•
Counterweight reflector	√
Rollover protection structure	√

Chassis system and shield	
Track tension	√
Towing eye on base frame	√
Steel track	√
Sealing plate of traveling motor	√
Dozer blade	√
Carrier roller and track roller	√

Cab and interior	
Cup holder	√
Engine key switch	√
Extinguisher bracket	√
Fire Extinguisher	•
Washable floor mat	√
Footrest	√
Seat	√
Safety belt	√
Operating handle	√
Travel control pedal with removable manual lever	√
High and low travel speed switch	√
Backup power supply	√
File pocket	√
Rear view mirror	•
LCD monitor	√

Working Device	
2.09m Boom	√
1.30m Arm	√
0.06 m³(ISO full bucket)	√
Quick coupler	•
Breaker	•

Electric system	
Storage battery (1x60Ah)	√
Starting motor (1.4kW)	√
Cigarette lighter (12V)	•
Power outlet (12V)	√
Engine coolant temperature display	√
Fuel level display	√
Engine speed display	√
Working hours display	√
Engine oil pressure and overheat warning	√
Charging indicator	√
Air filter blockage alarm	√
Engine preheating indication	√

Light	
Work lights on boom	√

Counterweight	
Counterweight	√

√- Standard    •- Optional

Product Specifications	Unit	XE26U
Operating weight	kg	2,780
Bucket capacity	m <sup>3</sup>	0.06
<b>Engine</b>		
Engine model	/	D1105
Direct injection	/	-
4 strokes	/	√
Water cooled	/	√
Turbocharged	/	-
Number of cylinders	/	3
Engine rated power (GB/T 17692)	kw/rpm	15.4/2,400
Maximum torque/rpm	N.m	70.3/1,600
Displacement	L	1.123
<b>Main performance</b>		
Travel speed	km/h	3.6/2.1
Swing speed	r/min	10
Gradeability	°	≤30
Ground pressure	kPa	26.3
Bucket digging force	kN	23
Arm digging force	kN	14
Maximum traction force	kN	29.7
Boom offset (Left)	°	75
Boom offset(Right)	°	55

Product Specifications	Unit	XE26U
<b>Hydraulic system</b>		
Rated flow of main pump	L/min	82.8
Main safety valve pressure	MPa	24.3
Travel system pressure	MPa	24.3
Swing system pressure	MPa	16.2
Pilot system pressure	MPa	3.5
<b>Oil capacity</b>		
Fuel tank capacity	L	33
Hydraulic oil tank volume	L	22
Engine oil capacity	L	5.1
<b>Standard</b>		
Boom length	mm	2,090
Arm length	mm	1,300
Bucket capacity	m <sup>3</sup>	0.06

Product Specifications	Unit	XE26U
<b>Overall dimensions</b>		
a Overall length	mm	4,190
b Overall width	mm	1,500
c Overall height	mm	2,580
d Width of platform	mm	1,350
e Track length	mm	1,980
f Overall width of undercarriage	mm	1,500
g Track width	mm	300
h Tumbler distance	mm	1,560
i Track gauge	mm	1,200
j Counterweight clearance	mm	535
k Minimum ground clearance	mm	290
l Minimum tail swing radius	mm	790
m Track height	mm	475

Product Specifications	Unit	XE26U
<b>Working scope</b>		
A Maximum digging height	mm	4,390
B Maximum digging depth	mm	2,800
C Maximum dumping height	mm	3,120
D Maximum vertical wall digging depth	mm	2,310
E Minimum swing radius	mm	1,980
F Maximum digging reach	mm	4,750
G Maximum dozer lifting height	mm	330
H Maximum digging depth of dozer blade	mm	300

